

THE WHITEKNIGHTS ARROW

23rd January 2026—Issue No: 18



NEXT WEEK

**Monday,
26th January**

**Tuesday,
27th January**

Little City Visit Little Gems

Y4 Trip to University of Reading (Jasper Class) within school hours

**Wednesday,
28th January**

**Thursday,
29th January**

Y2 Trip to University of Reading (Topaz & Opal Classes) within school hours

**Friday,
30th January**

Y 1 Trip to Milestones, Basingstoke

**ON THE
MENU**

Available daily: Freshly Baked Bread, Jacket Potato with a Choice of Fillings, Salad Selection, Fresh Fruit, Yoghurt

MONDAY

TUESDAY

WEDNESDAY

THURSDAY

FRIDAY

Macaroni Cheese with Side Salad
Sweet Potato & Chickpea Falafel with Pitta & Salad
Glazed Carrots & Peas
Vanilla Shortbread

Chicken Pie with Potato Wedges
Vegetable Pie with Potato Wedges
Carrots & Green Beans
Wholemeal Lemon Shortbread with Custard

Pork Sausages with Mashed Potato & Gravy
Vegetable Sausages with Mashed Potatoes & Gravy
Glazed Carrots & Peas
Pear & Chocolate Crumble with Custard

Beef Bolognese with Spaghetti
Quorn Bolognese with Spaghetti
Broccoli & Sweetcorn
Orange Jelly with Fresh Fruit Slices

Battered Fish & Chips with Tomato Sauce
Cornish Style Vegetable Pasty with Chips & Tomato Sauce
Peas & Baked Beans
Chocolate Chip Oat Cookie



By embracing challenge, nurturing wonder and aspiring to new heights, we "Grow in Greatness".

ATTENDANCE MATTERS!



EVERY CHILD



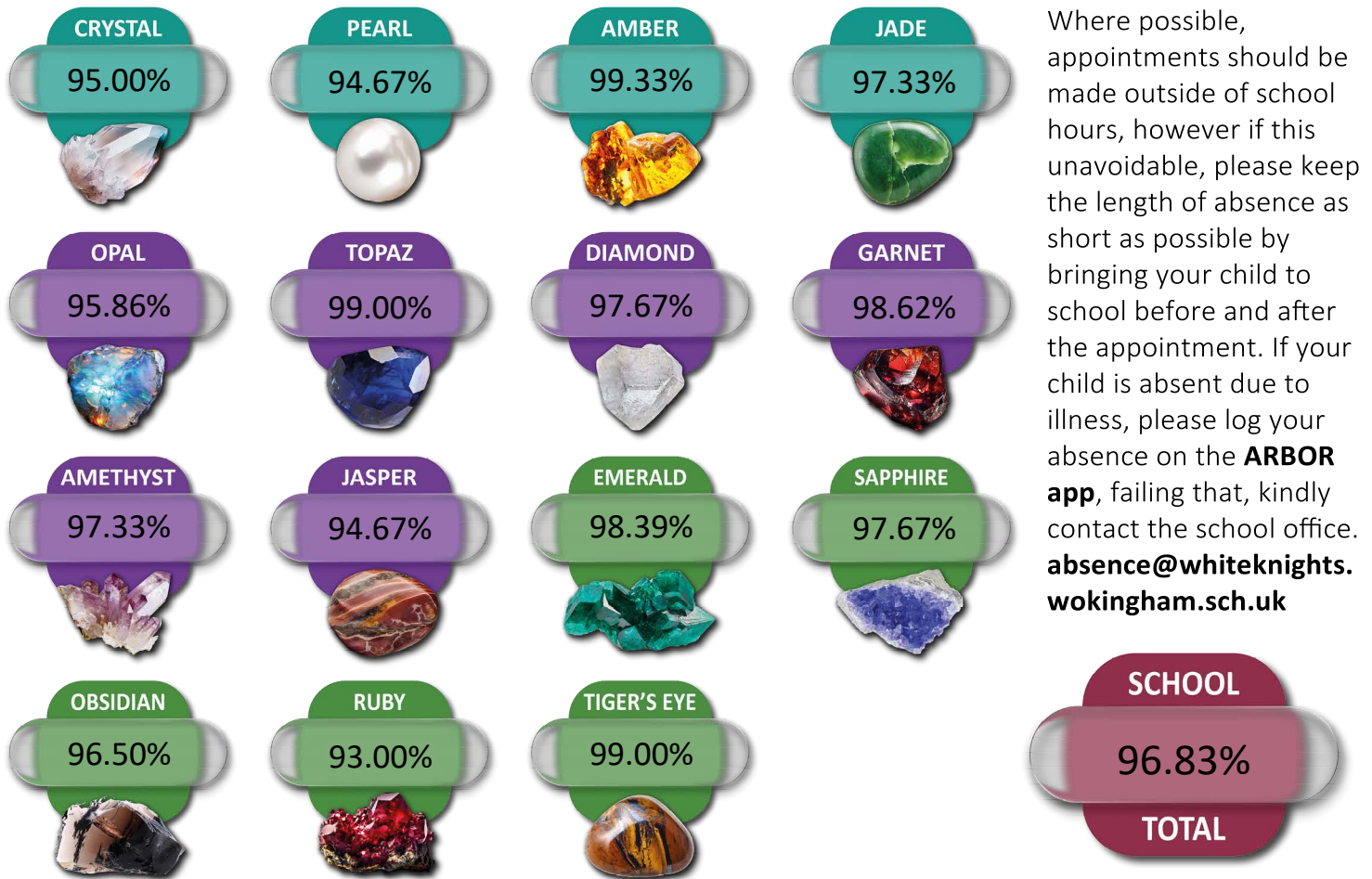
IN SCHOOL



ON TIME



EVERY DAY



Where possible, appointments should be made outside of school hours, however if this unavoidable, please keep the length of absence as short as possible by bringing your child to school before and after the appointment. If your child is absent due to illness, please log your absence on the **ARBOR app**, failing that, kindly contact the school office. **absence@whitenights.wokingham.sch.uk**

When you're not in school you miss out on...



Learning new skills



Good assessment results



Support and help



Time with friends



Best chance to succeed

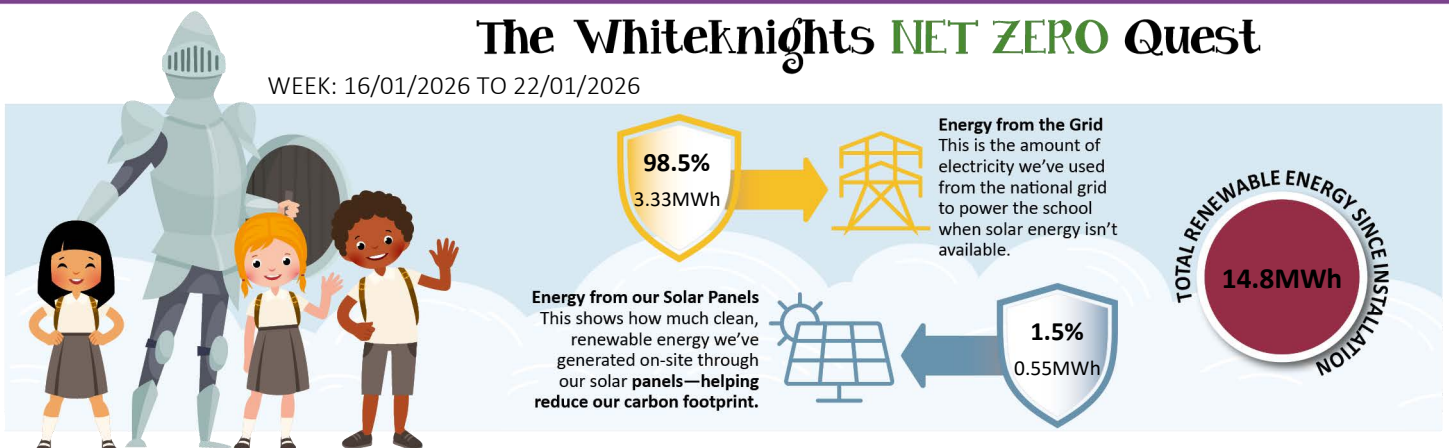


School activities



The Whitenights NET ZERO Quest

WEEK: 16/01/2026 TO 22/01/2026



BREAKFAST CLUB CHANGE OF LOCATION

Just to make you aware that due to a workshop taking place in the hall, Breakfast Club will be held in Obsidian Classroom on Tuesday 27th January 2026. Please enter the school via the school office on this date.

IMPORTANT



WINTER UNIFORM

Just a reminder that children should be in their winter uniform, with a warm, waterproof coat: For further information please refer to our **UNIFORM POLICY**

Remember—no children's umbrellas into school!

Girls:	Boys :	Other items:
Compulsory grey v-neck sweatshirt, jumper or cardigan with school logo	Compulsory grey v-neck sweatshirt, jumper or cardigan with school logo	Children with pierced ears may wear one pair of stud earrings to school.
White collared blouse (long or short sleeved)	White collared shirt (long or short sleeved)	
Compulsory school tie (KS2)	Compulsory school tie (KS2)	Plain watches (not toy watches) may be worn; however, they must be removed prior to playing sport and during PE lessons.
Charcoal grey pinafore, skirt or skorts	Charcoal grey trousers or shorts	
Grey socks, tights or white socks	Grey or white socks	
Sensible black shoes	Sensible black shoes	If there is a religious reason for wearing jewellery, please seek permission from the Headteacher.
Summer: red/white gingham dress or a white polo shirt	Summer: white polo shirt	
Hair:		
Hair should be kept tidy. Hair covering eyes must be clipped back to ensure it is away from the eyes and long hair should be tied back with a plain grey, brown or black hair band at all times.		
Children are not permitted to:		P.E. kit:
*Wear rings or necklaces or any form of jewellery to school.		Compulsory P.E. top with logo
Wear make-up or nail varnish to school.		Black P.E. shorts/skort OR Tracksuit bottoms
<i>*If there is a religious reason for wearing jewellery, please seek permission from the Headteacher.</i>		Cold weather tracksuit top
		Outdoor Trainers + Indoor plimsolls (black)

NO NUTS IN SCHOOL

We kindly request that you do not send any food containing nuts or nut products into school for packed lunches or as snacks.

Children with nut allergies can suffer severe, potentially life-threatening anaphylactic shock from ingestion, skin contact, or even smelling nuts.

This includes peanut butter, nut-based chocolate spreads (like Nutella), most cereal/ granola bars, cakes with nuts, and some Asian sauces like satay.

Please check all packaging carefully. If a product says 'contains nuts,' it must not come to school. Items labelled 'may contain nuts' or 'made in a factory that uses nuts' present a lower risk and are generally allowed.

NET ZERO ACCELERATOR UPDATE

We're excited to share that our journey towards Net Zero is already making a real difference—between January and December 2025, since joining the **Net Zero Accelerator Programme Pathfinder**, we have achieved significant energy savings.

Our electricity savings totaled **£11,626**, with a further **£6,917** saved on gas.

We are immensely grateful for the support of our partners in the programme and remain committed to creating an environmentally sustainable school for our community and the future.



Be a Citizen Scientist!

Join the Big Garden Birdwatch—this weekend!



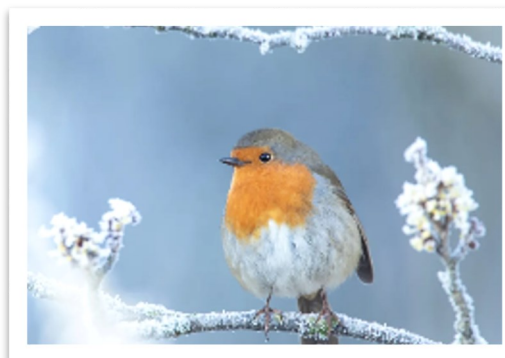
As a school, we are proud to be committed to sustainability and caring for our environment — and now we're inviting our families and children to get involved too.

Big Garden Birdwatch is the world's largest garden wildlife survey.

Each year, hundreds of thousands of people take part, helping scientists build a clearer picture of how garden birds are faring across the UK.

This weekend, you can become a **citizen scientist** by taking part at home or in your local area:

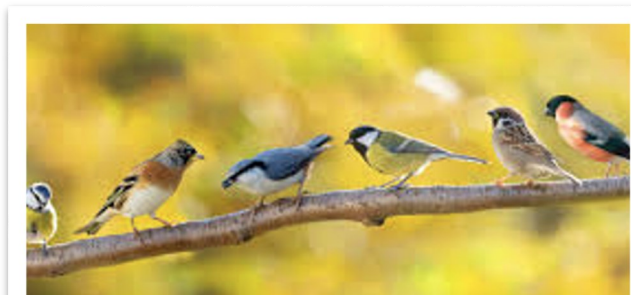
- Put out some bird food
- Spend time observing which birds visit
- Record what you see using the online survey
- No garden? No problem — a local park or green space works just as well
- Even if you see *no birds at all*, that information is still really valuable



Use the survey link to log your results and help protect our wildlife.

Get involved and share the moment!

If you take part, please send in photos of you carrying out your bird survey. We'll feature them in next week's newsletter and share them with class teachers — **house points will be awarded**, and it may even count as a task to tick off in your **Knighthood book**.



SURVEY LINK

LIBRARY BUNTING COMPETITION

Help us create a brilliant display across our library! Download and print the template, then draw or write about your favourite book or poem, making it bright and colourful. If your design is chosen, it will be turned into beautiful bunting for everyone to enjoy in the library. Remember to include your name and class on the back of your design.

*Download the **BUNTING TEMPLATE**, or alternatively, pop into the office for a print out of the template.*



WHITEKNIGHTS PRIMARY

NEW PARENT SURVEY 2025-2026



32 families
answered
the survey



"We are happy and proud to be a part of the Whiteknights Community!"

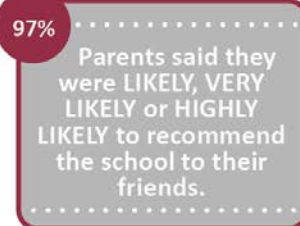
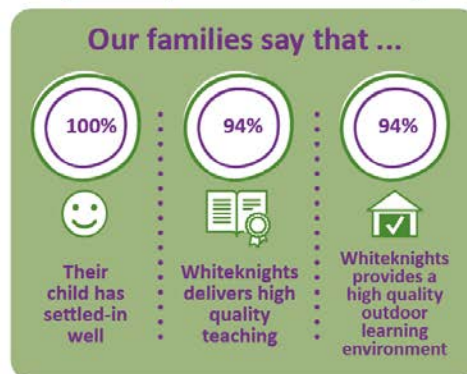
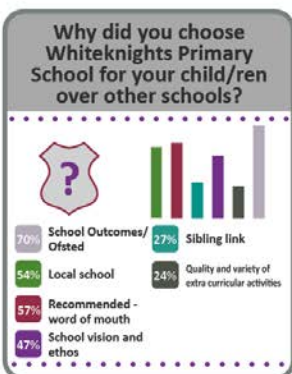
"Thank you so much for everything you do! My daughter is so precious to us and I really feel at ease and so happy knowing she is safe and being well looked after."

"We are very happy with the school and the children are very happy to go there every day."

"I am always emailing the school and they are so lovely and they always reply fast and just keep my mind at ease."



"What impressed me the most were the two girls who gave us the tour of the school - so young, but so polite, and proud of their school. I still talk about this part of the tour when I recommend Whiteknights to my friends. It truly shows how much you trust your pupils when giving them this important task of showing parents around and explaining what they do at school. I envisioned my daughter in a couple of years, being there all grown up and giving someone a tour of the school! Love the independence you give them and the trust you have in the pupils."



www.whiteknights.wokingham.sch.uk
admin@whiteknights.wokingham.sch.uk
 0118 987 2588



www.s4ksessionfinder.co.uk
 0300 303 3866

School Holiday Camp Opening Here!

Every School Holiday at Whiteknights Primary School



ACTION ADVENTURE CAMP
 Running 17th - 21st Feb

Standard Day: 9am to 5pm care
 Extended Day: 8am to 6pm care



BOOK NOW!

FEBRUARY HALF TERM HOLIDAY CLUB

The Sport4Kids Holiday Club provides a fun, active, and well-structured holiday provision for children aged **4-13 years** (children of 4 years of age must be in Reception).

The club runs a varied **multi-activity programme**, giving children the opportunity to take part in a wide range of sports and creative activities. The camp is **Ofsted registered**, and **childcare vouchers are accepted**. Sibling discounts available.

Standard Day – £40 per day
 Drop-off: 9:00am
 Collection: 5:00pm

Extended Day – £45 per day
 Drop-off: 8:00am
 Collection: 6:00pm

CLASS NOTICES



NURSERY LITTLE GEMS

KNOWLEDGE ORGANISER

Please click on the thumbnail to view the knowledge organizer showing what your child will be learning about in class over the next two weeks.



RECEPTION CRYSTAL & PEARL

KNOWLEDGE ORGANISER

Please click on the thumbnail to view the knowledge organizer showing what your child will be learning about in class for the next week.



Can we please ask parents to provide a jumper to wear during the colder weather. Could we also ask that socks are packed in the PE kit (this is particularly important to those children who wear tights to school)



YEAR 1 AMBER & JADE

YEAR 1 DT

Over the next couple of weeks, year 1 will be making cars during their DT lesson.

Can you please donate any type of cardboard, small cardboard boxes and bottle tops to help produce their wonderful creations.

Thank you!



YEAR 2 OPAL & TOPAZ

MATHS HOMEWORK

Please see the Year 2 Maths homework due dates and which pages need to be completed .

Year 2	
Homework due date	Pages to complete
Monday 26 th January	48 to 50
Monday 2 nd February	52 to 54
Monday 9 th February	55 to 57



YEAR 2 HORIZONTAL AND DIAGONAL JOINS

Please click on the thumbnails to enlarge . These are Worksheets for horizontal and diagonal joins for your child to practice. Should you require hard copies, then please do ask the school office.



YEAR 3 DIAMOND & GARNET

DIAMOND CLASS ENRICHMENT

Diamond class will be off their usual afternoon timetable for the three weeks listed below. They will be participating in Sports, Outdoor/ Nutritional Learning or Science Lab!

Monday 12th – Friday 16th January (Week 2 of spring 1)

Monday 19th – Friday 23rd January (Week 3 spring 1)

Monday 26th – Friday 30th January 2026 (Week 4 spring 1)

The class will be split into three different groups, and take turns to partake in the activities, changing weekly. Your child has been given a letter to say which group they are in and what clothes they will need and for which date. There will be food tasting sessions (a separate email has been sent) Please do let the school office know if you have any queries/food restrictions.



UPCOMING EVENTS



Note:
Dates highlighted in yellow show where amendments have been made or additional dates have been added.

Tuesday, 27th Jan	Little City Visit Little Gems 09:00—11:00
Tuesday, 27th Jan	Y4 Trip to University of Reading (Jasper Class) within school hours
Thursday, 29th Jan	Y2 Trip to University of Reading (Topaz & Opal Classes) within school hours
Friday, 30th Jan	Y 1 Trip to Milestones, Basingstoke
Wednesday, 4th Feb	Librarian Visit to Little Gems (AM Session)
Thursday, 5th Feb	Y 2 SPLAT at 14:00
Monday, 9th Feb	Eco Council Meeting (at Whiteknights)
Tuesday, 10th Feb	Nursery SPLAT at 14:00
Tuesday, 10th Feb	Y 5 and Y 6 Girls Netball Tournament
Wednesday, 11th Feb	Chinese Dragon Dance Visit Reception
Thursday, 12th Feb	Y 3 REInspired Visit
Thursday, 12th Feb	Reception SPLAT at 14:00
Friday, 13th Feb	Non Uniform Day—Wear Something Red for £1 Donation
Monday 16th Feb— Friday, 20th February	Half Term
Monday, 23rd Feb	SATS Information Evening at 17:00
Tuesday, 24th Feb	Y 5 and Y 6 Girls Netball Tournament
Friday, 27th Feb	Y 5 and Y 6 SPLAT at 14:00
Monday, 2nd Mar	Eco Council to University of Reading
Tuesday, 3rd Mar	Y 5 and Y 6 Girls Netball Tournament
Wednesday, 4th Mar	Y 3 SPLAT at 14:00
Friday, 6th Mar	World Book Day—More Details to Follow
Mon, 9th—Fri, 20th Mar	Living Eggs in EYFS
Wednesday, 11th Mar	Lara Drama Performance 15:30—16:30 (Reception—Y 2) Last Session
Friday, 13th Mar	Lara Drama Performance 15:30—14:30 (Y 3—Y 6) Last Session
Friday, 13th Mar	Book Fair 15:30—16:00
Monday, 16th Mar— Tuesday, 17th Mar	Book Fair 15:30—16:00
Wednesday, 18th Mar	Y 1 SPLAT at 14:00
Thursday, 19th Mar	Final Swimming Session for Jasper Class
Monday, 23rd Mar	Y 3 & 4 Dress Rehearsal 13:30 in the School Hall
Tuesday, 24th Mar	Y 3 & 4 Production to Parents 09:30
Tuesday, 24th Mar	Y 3 & 4 Production to Parents 13:30
Tuesday, 24th Mar	Parent Consultations 15:40—18:10
Wednesday, 25th Mar	Parent Consultations 16:00—18:30
Thursday, 26th Mar	Egg Rolling Competition
Thursday, 26th Mar	Y 2 STEMbotics Workshop
Friday, 27th Mar	Easter Bonnet Parade Last Day of Term School Finishes at 15:20. No ASC running today
Monday, 13th Apr	Staff and Pupils Return to School





CELEBRATING WHITEKNIGHTS

WPS SHOWCASE: SCHOOL LIFE, NEWS AND LEARNING ACHIEVEMENTS

Discover the latest school news, including classroom highlights, sporting events, school trips and more.

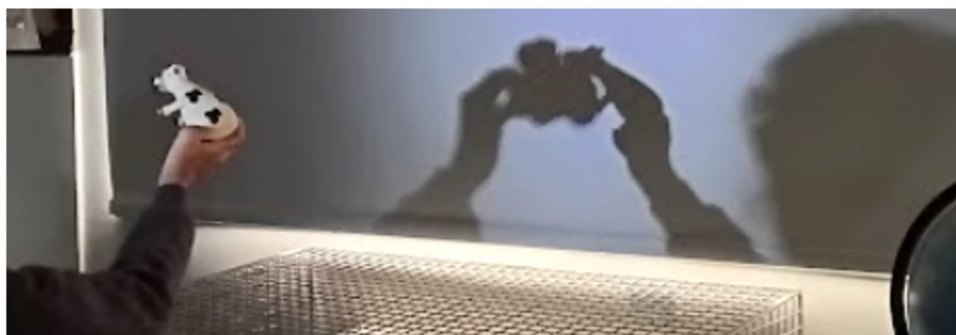
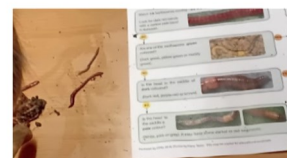
LITTLE GEMS: LIBRARIAN VISIT

Last week, Little Gems enjoyed a visit from a librarian from Lower Earley Library. She read them a range of stories and they were totally enthralled. After the reading session, pupils used a sticker chart to vote for their favourite story, encouraging discussion and early reading preferences.



YEAR 3 SCIENCE LAB

Year 3 are learning about *Living Things and Their Habitats* this term. Pupils have explored different habitats around the school grounds and created wormeries to observe living things up close. As part of their wider science learning, they have also investigated light as an energy source, including light, shadow, transparency, and opaque materials. Pupils also created a puppet show to demonstrate their understanding!





NON-SCHOOL UNIFORM DAY



Friday 13th February!
Wear Something Red
& Donate £1!

NEED A FEW SPARE ITEMS? WHY DON'T YOU VISIT THE WPCA
TWICE AS NICE UNIFORM SHOP FOR PRE-LOVED ITEMS AT
AFFORDABLE PRICES, ALL WHILE RAISING FUNDS FOR THE SCHOOL.

TWICE AS NICE UNIFORM SHOP

www.uniformd.co.uk/whiteknights-primary
email enquiries to: whiteknightspca@gmail.com

