

# THE WHITEKNIGHTS ARROW



10th October 2025—Issue No: 6

**NEXT WEEK**

**Monday,  
13<sup>th</sup> October**

Whole School Harvest Celebration— please bring in donations (see notices)

**Tuesday,  
14<sup>th</sup> October**

HARRISON'S TASTER MENU—families are invited to enjoy a taster menu at collection time by the school gates

WPCA EVENT—Happy's Circus (gates open at pm)

**Wednesday,  
15<sup>th</sup> October**

**Thursday,  
16<sup>th</sup> October**

YEAR 4 AMETHYST CLASS—SWIMMING

**Friday,  
17<sup>th</sup> October**

WPCA NON-UNIFORM DAY—£1 donation

**ON THE  
MENU**

Available daily: Freshly Baked Bread, Jacket Potato with a Choice of Fillings, Salad Selection, Fresh Fruit, Yoghurt

MONDAY

Cheese & Leek Pinwheel with  
Potato Wedges  
Indian Style Vegetable &  
Chickpea Biryani  
Carrots & Peas  
Apple Crumble & Custard

TUESDAY

Piri Piri Chicken with Sweetcorn  
Rice & Lemon Dressing  
Sweet Potato & Red Pepper  
Pattie with Sweetcorn Rice &  
Lemon Dressing  
Savoy Cabbage / Green Beans  
Chocolate Shortbread with  
Orange Wedges

WEDNESDAY

Chicken Sausages with Herby  
New Potatoes & Gravy  
Vegetable Sausages with Herby  
New Potatoes & Gravy  
Glazed Carrots / Courgettes with  
Roast Tomatoes  
Berry Swirl Sponge Cake &  
Custard

THURSDAY

Beef Penne Pasta with Cheese  
Tomato & Herb Penne Pasta with  
Cheesy Topping  
Broccoli / Herb Roasted Butternut  
Squash  
Strawberry Jelly with Fresh Fruit  
Slices

FRIDAY

Battered Fish & Chips with  
Tomato Sauce  
Cornish Style Vegetable Pasty  
with Chips & Tomato Sauce  
Peas / Baked Beans  
Lemon Sponge Cake with  
Custard

**REMINDER**

Harvest Celebration on  
Monday 13th October.

Non-Uniform Day on Friday 17th  
October. Remember your £1 donation.



# ATTENDANCE MATTERS!



EVERY CHILD



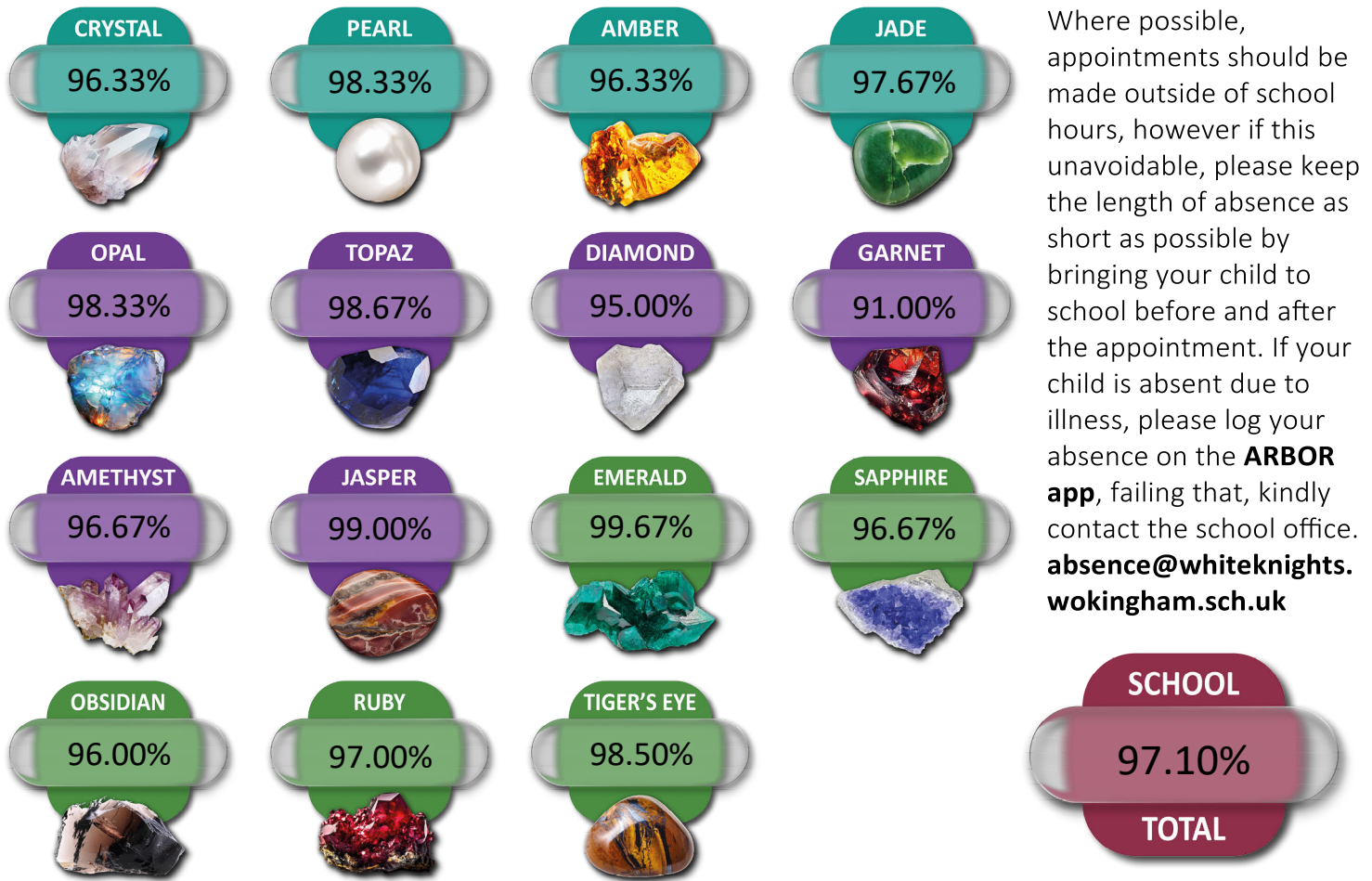
IN SCHOOL



ON TIME



EVERY DAY



Where possible, appointments should be made outside of school hours, however if this unavoidable, please keep the length of absence as short as possible by bringing your child to school before and after the appointment. If your child is absent due to illness, please log your absence on the **ARBOR app**, failing that, kindly contact the school office. [absence@whiteknights.wokingham.sch.uk](mailto:absence@whiteknights.wokingham.sch.uk)

When you're not in school you miss out on...



Learning new skills



Good assessment results



Support and help



Time with friends



Best chance to succeed

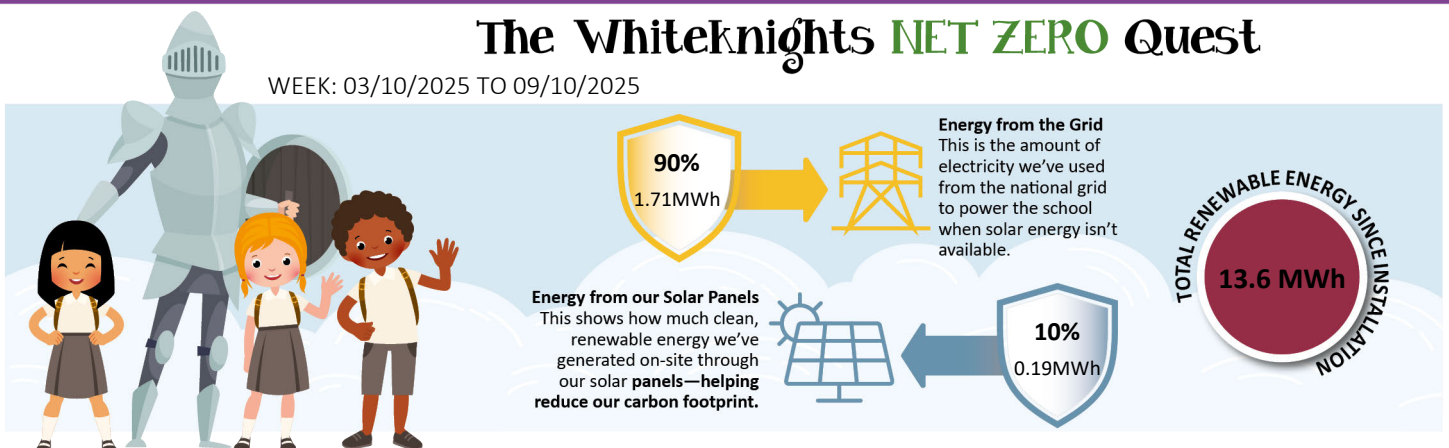


School activities



## The Whiteknights **NET ZERO** Quest

WEEK: 03/10/2025 TO 09/10/2025





## ARBOR LUNCH ORDERS

When cancelling a meal order through the **Arbor Parent Portal** or **app**, parents should select '**Absence**' for the meal they wish to cancel. **This will not affect your child's school attendance**; it simply indicates that they are absent for the Harrison's meal on that day.

## SCHOOL BAG ADORNMENTS

Can we kindly request that your **children do not attach any toys to their school bag**. They are causing too much distraction, and we would hate for them to get damaged or lost.



We are excited to celebrate our **Harvest Festival** on **Monday, 13th October**. As part of our tradition, we will be supporting **ReadiFood**, a local food bank, and would greatly appreciate your donations.

Please bring your donations on **Monday morning** and place them on the tables located outside the hall, under the covered area.

Here are the current shortages that ReadiFood is in need of:

### Food items:

Tinned tomatoes, tinned vegetables (carrots, peas, sweetcorn, etc.), tinned fruit, cooking oil, tinned meat, pot noodles, long-life or UHT milk, 40s tea bags, basmati rice, rice pouches, cartons of juice, drinking squash, coffee.

### Specialist food needs:

Dried noodles, dried lentils, dried couscous, plain flour.

### Other items:

Sanitary items, shampoo, conditioner, hand soap, shower gel.

For more information on **ReadiFood** and the work they do, please visit their website: **[ReadiFood – Faith]** (<https://fcg.org.uk>).



**ReadiFood**

**HARRISON**  
food with thought

**Whiteknights Primary Lunch  
Questionnaire**

Harrisons would be grateful if you could take the time to complete their brief survey on your child's dining experience:

[LUNCH QUESTIONNAIRE](#)



## WHAT'S COOKING AT WHITEKNIGHTS?

Pop by the school gates after school on Tuesday, 14 October to find out! Harrison's will be offering a special taster menu for families — a great chance to see (and taste!) the variety of wholesome meals our children enjoy each day.

**HARRISON**  
food with thought



## Taster Menu

Piri Piri Chicken with Potato  
Wedges

Beef Keema Curry with Basmati  
Rice

Vegetable Lasagne & Garlic  
Bread

Chocolate Cake

Apple Flapjack





## Consultation on proposed Admission Arrangements for The Circle Trust School's 2027/28

### Introduction

St Crispins School, Nine Mile Ride Primary, Owlsmoor Primary, Badgemore Primary and The Hawthorns Primary are academy schools. The Circle Trust is the admission authority for the schools.

Consultations usually take place when admission authorities wish to make changes to their admission arrangements, or they have not been consulted on in the last 7 years and therefore the following consultations are taking place:

### How can you respond?

We would like to hear your views. Please send any comments regarding the admission arrangements to: [consultation.education@bracknell-forest.gov.uk](mailto:consultation.education@bracknell-forest.gov.uk)

- Please mark your email THE CIRCLE TRUST CONSULTATIONS
- The consultation takes place between 06 October 2025 and 24 November 2025
- Copies of the proposed arrangements can be obtained on the school's websites:
- <https://www.crispins.co.uk/>
- <https://ninemileride.co.uk/>
- <https://owlsmoorprimary.com/>
- <https://www.badgemore.oxon.sch.uk/>
- <https://www.hawthorns.wokingham.sch.uk/>

### What happens next?

- After the consultation closes the responses will be collated and presented to The Circle Trust, who will consider any comments and determine the arrangements. The outcome will be published on the school's website by 15 March 2026.

## CLASS NOTICES



### NURSERY LITTLE GEMS

Please click on the thumbnail to view the knowledge organizer showing what your child will be learning about in class next week.



### RECEPTION CRYSTAL & PEARL

Please click on the thumbnail to view the knowledge organizer showing what your child will be learning about in class next week.





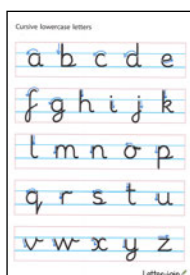
## YEAR 1 AMBER & JADE

Year 1 Maths homework due dates and which pages need to be completed. The class teacher will check their Maths homework every Tuesday to see if the children have done the homework.

Year 1	
Homework due date	Pages to complete
16 <sup>th</sup> September	4-6
23 <sup>rd</sup> September	7-9
30 <sup>th</sup> September	10-12
7 <sup>th</sup> October	13-15
14 <sup>th</sup> October	16-18
21 <sup>st</sup> October	20-22



## YEAR 2 OPAL & TOPAZ



Following on from our SPLAT last week, please click on image to view how to correctly write cursive lowercase letters.

Should you require a hard copy, then please do ask the school office.

Year 2 Maths homework due dates and which pages need to be completed.

Year 2	
Homework due date	Pages to complete
22 <sup>nd</sup> September	4 – 6
29 <sup>th</sup> September	7 – 9
6 <sup>th</sup> October	10 – 12
13 <sup>th</sup> October	13 – 15
20 <sup>th</sup> October	17 – 19
3 <sup>rd</sup> November	20 - 22



## YEAR 3 DIAMOND & GARNET

Each week, Year 3 pupils should complete the homework listed, and return completed homework for checking every Wednesday.

- Two maths nuggets on Century
- Read every day, and write in your diary. Use the first page to guide your child to write in their diary
- Complete a Accelerated Reader quiz at least once every three weeks, but should be completed as soon as your child has finished their book
- Spellings



## YEAR 5 EMERALD & SAPPHIRE

### WINCHESTER SCIENCE MUSEUM TRIP Thursday 27th November 2025

Just a reminder that voluntary contributions need to be paid by Friday, 31st October 2025. Thank you!



## YEAR 6 OBSIDIAN, RUBY & TIGER'S EYE

### ELECTRICITY AND CIRCUITS WORKSHOP Friday 24th October 2025

Due to low contributions, we are keeping the payment option open on Arbor until Friday 17th October.

We urge all parents to make a contribution for this workshop to take place. Thank you!

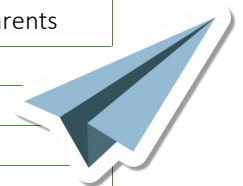




# UPCOMING EVENTS



<b>Tuesday, 14th Oct</b>	WPCA - Happy's Circus Visit (Doors Open 4pm to Start at 5:30pm)
<b>Friday, 17th Oct</b>	WPCA non-uniform day (£1 donation)
<b>Tuesday, 21st Oct</b>	2pm - Year 3 SPLAT in the School Hall
<b>Friday, 24th Oct</b>	Year 3 trip to Butser Ancient Farm
	Year 6 Electricity and Circuits Workshop
	Last Day of Term—School Finishes at 3:20pm
<b>Monday, 3rd Nov</b>	INSET Day—School Closed for Pupils
<b>Tuesday, 4th Nov</b>	Staff and Pupils Return to School
<b>Thursday, 6th Nov</b>	9:45am - Guided School tour for prospective families
<b>Friday, 7th Nov</b>	Remembrance Parade
<b>Monday, 10th Nov</b>	Year 6 Leave for Residential Trip to Mill on the Brue
<b>Wednesday, 12th Nov</b>	Year 3-Diamond Class visit to UOR for Fossil Workshop
<b>Thursday, 13th Nov</b>	2pm - Year 1 SPLAT in the School Hall
	Year 3-Garnet Class visit to UOR for Fossil Workshop
<b>Friday, 14th Nov</b>	Year 4 REInspired Visit
	Year 6 Return from Mill on the Brue Residential Trip
<b>Thursday, 20th Nov</b>	3:30pm to 4pm - Year 5 Parent Information Evening for Year 6 Residential Trip 2026
<b>Friday, 21st Nov</b>	2pm - Year 5 and Year 6 SPLAT in the School Hall
<b>Thursday, 27th Nov</b>	Year 1 REInspired Visit
	Year 5 Trip to Winchester Science Museum
<b>Friday, 28th Nov</b>	1:30pm - Guided School tour for prospective families
<b>Sunday, 7th Dec</b>	WPCA Panto Trip to the Hexagon Theatre (outside of school hours)
<b>Tuesday, 9th Dec</b>	1:30pm - Guided School tour for prospective families
	3:40pm to 6pm - Parent's Evening
<b>Wednesday, 10th Dec</b>	4pm to 6:30pm - Parents' Evening
<b>Monday, 15th Dec</b>	Year 4 Leave for Residential Trip to Burwell House
	Year 1 and Year 2 Dress Rehearsal for Christmas production
<b>Tuesday, 16th Dec</b>	9:30am and 2pm - Year 1 and Year 2 Christmas Production Performances to Parents
<b>Wednesday, 17th Dec</b>	Christmas Jumper Day/Christmas Dinner
	Year 4 Return from Burwell House
<b>Thursday, 18th Dec</b>	Church Carols Service—Year 5
	1:30pm - Nursery SPLAT in School Hall
<b>Friday, 19th Dec</b>	Last Day of Term. School closes promptly at 3:20pm. No After School Clubs.
<b>Monday, 5th Jan</b>	Staff and Pupils Return to School





## CELEBRATING WHITEKNIGHTS

### LEARNER SHOWCASE: SCHOOL LIFE, NEWS AND LEARNING ACHIEVEMENTS

Discover the latest school news, including classroom highlights, sporting events, school trips and more, click on the links below:-

#### YEAR 3 STEP INTO THE SHOES OF A PALAEOONTOLOGIST

This week, Year 3 stepped into the shoes of famous fossil hunter **Mary Anning**, exploring what it means to be a palaeontologist. The children examined evidence of ammonites in rocks and discussed how fossils help us uncover the secrets of creatures from long ago. Inspired by Mary they even crafted their own clay fossils, bringing prehistory to life in the classroom.



## WPCA NOTICES



### CAN YOU BELIEVE IT? THE CIRCUS IS FINALLY HERE!

The wait is over — **Happy's Circus** arrives *next week*! Get ready for an unforgettable show filled with laughter, amazing acts, and fun for the whole family! If you haven't booked your tickets, don't delay, there are still some available to purchase.

Roll up, roll up — it's showtime!

We're still looking for a few **parent volunteers** to help on the evening — if you can lend a hand, please contact the WPCA or school office.

[whiteknightsPCA@gmail.com](mailto:whiteknightsPCA@gmail.com)





14 OCTOBER 2025

Don't delay, buy your tickets today!

**HAPPY'S CIRCUS**  
*From the kids will love it!*

**RUNNING OF EVENTS**

4.00pm	:	GATES OPEN (food available to purchase)
5.00pm	:	BIG TOP OPENS
5.10pm	:	PRE SHOW
5.30pm	:	SHOW STARTS
6.15pm	:	INTERVAL
6.45pm	:	SECOND HALF
7:30pm	:	SHOW ENDS

Photo opportunities after the show

Whiteknights Primary School, Fairlawn Green,  
Shinfield Rise, Reading, RG2 8EP (satnav RG2 8EG)

£15/ticket | Kids under 2yos - free | Kids to be accompanied by an adult | Food and beverages on sale | Fun for the whole family

SECURE YOUR BOOKING NOW!



SAVE THE DATE\_07.12.2025

ADMITTS\_1

**BEAUTY & THE BEAST**  
**PANTO**

7 DECEMBER, 5 PM AT THE  
HEXAGON, READING

TICKETS ON SALE THROUGH PTA EVENTS PAGE  
£28.50 PER TICKET, INCLUDING BOOKING FEE

OUR PANTO TICKETS ARE SELLING FAST!  
DON'T MISS OUT ON THIS ANNUAL  
FAMILY FAVOURITE EVENT — GET YOUR  
TICKETS TODAY!  
PLEASE NOTE: THE PANTO TAKES PLACE  
OUTSIDE OF SCHOOL HOURS, AND ALL  
CHILDREN MUST BE ACCOMPANIED BY AN  
ADULT.

